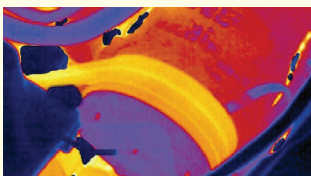


### Our Thermal Imaging Solutions Include:



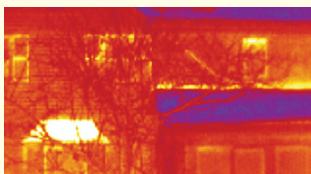
#### Electrical Predictive Maintenance Inspections & Troubleshooting

We check wiring and circuit breakers for overloads, and check control panels for broken wires and poor contacts.



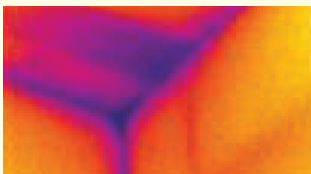
#### HVAC Predictive Maintenance Inspections & Troubleshooting

We check compressors, condenser motors, blower motors, bearings, heat exchangers, cooling coils and ductwork for blockages and airflow issues.



#### Building Envelope & Roof Inspections

We check for energy loss through walls, doors, windows and roofs, and effectively pinpoint missing or insufficient insulation.



#### Water Penetration Inspections

We can identify moisture penetration and mold in walls and roofs.

## A New Dimension in Problem Solving

DeBra-Kuempel's thermal imaging services can play a vital role in any company's facility maintenance program. Using infrared sensors, this technology creates "heat pictures" that highlight potential problem areas in your equipment. Since operating temperatures often rise sharply prior to a failure, the ability to identify these "hot spots" early helps provide highly effective preventive maintenance assistance.

Best of all, this technology can help detect potential failures on a wide range of electrical distribution systems, electro-mechanical equipment and process instrumentation. It can also be used to assess HVAC systems, roofs and insulation –virtually the entire building envelope.

### Increase reliability and reduce downtime

Using thermography, DeBra-Kuempel can significantly improve your facility's day-to-day operation and long-term performance. This technology:

- » Enables image comparisons over a period of time, so you can detect and resolve problems before failures occur
- » Is performed while your equipment is in operation, without downtime or disruptions
- » Lets service technicians evaluate normally inaccessible areas, substantially improving overall maintenance quality
- » Is performed quickly, enabling operators to scan more equipment faster, further increasing your maintenance program's reach and effectiveness
- » Helps you identify your next trouble "hot spot," so you can ensure consistently reliable operation, avoid unwanted downtime and get maximum return on your facility investment.

The result is a powerful leading-edge tool that can help you improve dependability, avoid downtime and extend the useful life of your valuable assets.

DeBra-Kuempel's thermal imaging services helps you anticipate maintenance problems and help eliminate them before they happen; preventing equipment failures, reducing business disruptions, minimizing the unexpected costs that can occur when your facility systems aren't properly maintained.



### How Can We Help You?

Headquarters: 3976 Southern Avenue, Cincinnati, OH 45227

800.395.5741 [dkemcor.com](http://dkemcor.com) [emcor\\_info@emcor.net](mailto:emcor_info@emcor.net)

DAYTON: 937.531.5455 | COLUMBUS: 614.529.7500 | ASHLAND: 606.331.7765 | LEXINGTON: 859.389.8662

LOUISVILLE: 502.368.0454 | MAYSVILLE: 606.563.8505 | PAINTSVILLE: 606.789.0004 | EVANSVILLE: 812.475.8665